


Community Collaboration For CWPPs: Key Lessons Learned

CWPP Lessons Learned Workshop
November 28, 2007
Lakewood, CO



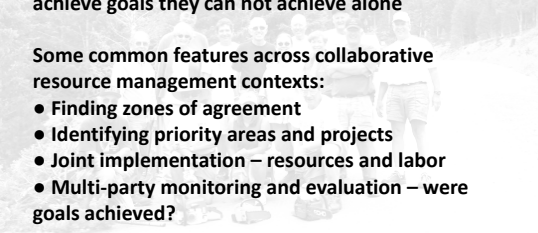
Windcliff Work Day, Estes Park, CO.
Photo by Joe Walsh

Collaboration...

When individuals voluntarily work through differences and share knowledge and resources to achieve goals they can not achieve alone

Some common features across collaborative resource management contexts:

- Finding zones of agreement
- Identifying priority areas and projects
- Joint implementation – resources and labor
- Multi-party monitoring and evaluation – were goals achieved?

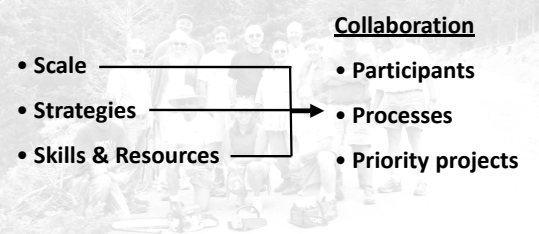


Windcliff Work Day, Estes Park, CO.
Photo by Joe Walsh

Factors Influencing Collaboration for CWPPs

Collaboration

- Scale
- Strategies
- Skills & Resources
- Participants
- Processes
- Priority projects

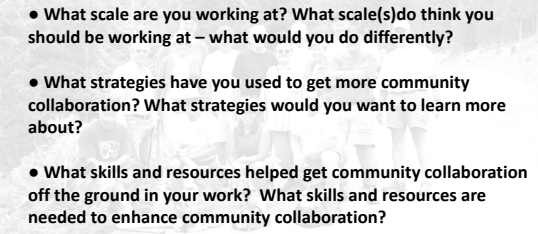


Windcliff Work Day, Estes Park, CO.
Photo by Joe Walsh

Factors Influencing Collaboration for CWPPs

DISCUSSION QUESTIONS:

- What scale are you working at? What scale(s) do think you should be working at – what would you do differently?
- What strategies have you used to get more community collaboration? What strategies would you want to learn more about?
- What skills and resources helped get community collaboration off the ground in your work? What skills and resources are needed to enhance community collaboration?

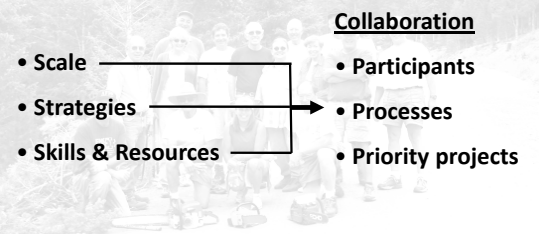


Windcliff Work Day, Estes Park, CO.
Photo by Joe Walsh

Factors Influencing Collaboration for CWPPs

Collaboration

- Scale
- Strategies
- Skills & Resources
- Participants
- Processes
- Priority projects

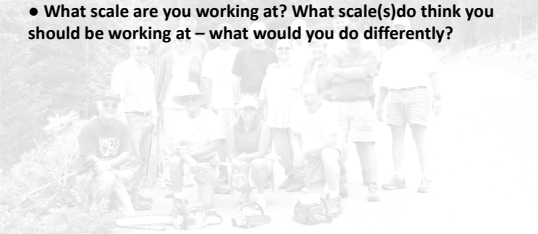


Windcliff Work Day, Estes Park, CO.
Photo by Joe Walsh

Factors Influencing Collaboration for CWPPs

DISCUSSION QUESTION:

- What scale are you working at? What scale(s) do think you should be working at – what would you do differently?



Windcliff Work Day, Estes Park, CO.
Photo by Joe Walsh

Factors Influencing Collaboration for CWPPs: Scale

- Goal = strategic, landscape-level planning and action

↓

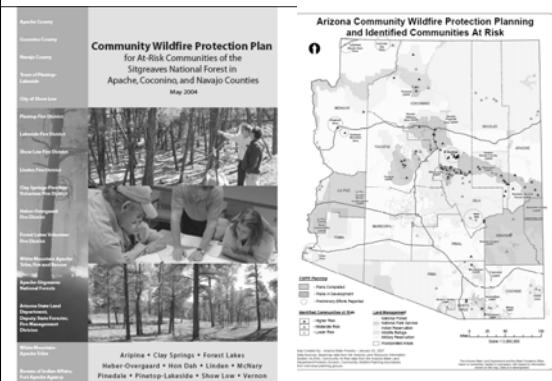
- Broader scale planning (multi-county, county, or multi-township)
- Agency involvement central

Lake County, Minnesota

Lake County, Minnesota







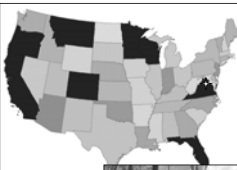


Factors Influencing Collaboration for CWPPs: Scale

- Goal = property owner-level planning and action

↓



- Smaller scale planning (neighborhood, homeowners association, community)
- Homeowner involvement central

High Knob, Virginia

Factors Influencing Collaboration for CWPPs: Scale

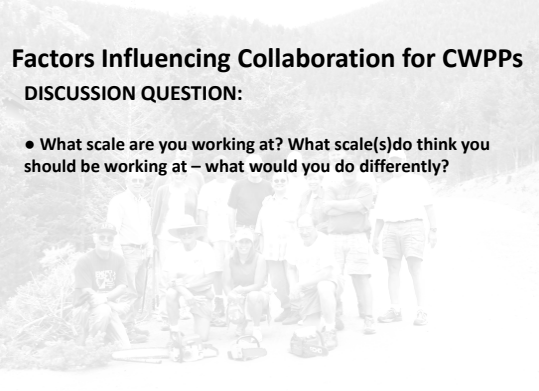
- There is no "best" scale – select scale where you can make something happen
- Consider tension and linkages between:
Small-scale, immediate ↔ Large-scale, long-term
property owner impact ↔ landscape-scale mgmt.

Factors Influencing Collaboration for CWPPs

DISCUSSION QUESTION:

- What scale are you working at? What scale(s) do you think you should be working at – what would you do differently?

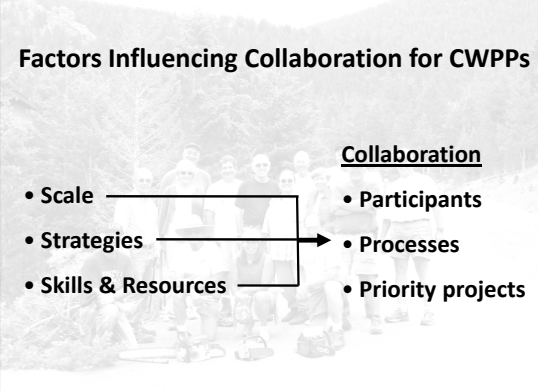


Windcliff Work Day, Estes Park, CO.
Photo by Joe Walsh

Factors Influencing Collaboration for CWPPs

Collaboration

- Scale
- Strategies
- Skills & Resources
- Participants
- Processes
- Priority projects

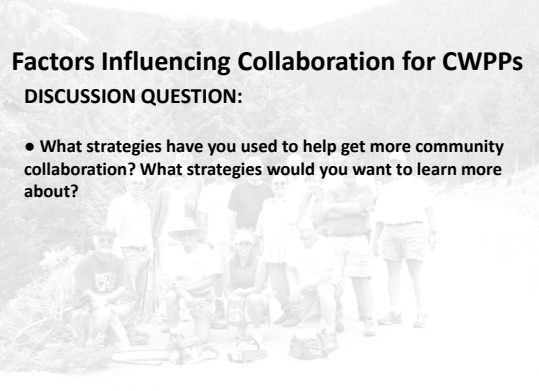


Windcliff Work Day, Estes Park, CO.
Photo by Joe Walsh

Factors Influencing Collaboration for CWPPs

DISCUSSION QUESTION:

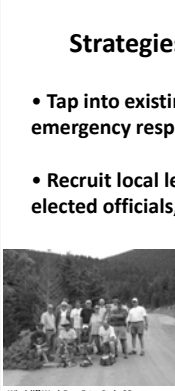
- What strategies have you used to help get more community collaboration? What strategies would you want to learn more about?



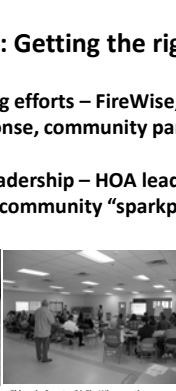
Windcliff Work Day, Estes Park, CO.
Photo by Joe Walsh

Strategies: Getting the right people

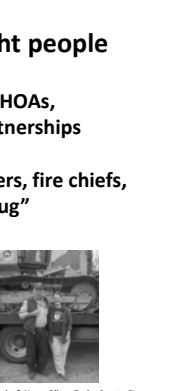
- Tap into existing efforts – FireWise, HOAs, emergency response, community partnerships
- Recruit local leadership – HOA leaders, fire chiefs, elected officials, community “sparkplug”



Windcliff Work Day, Estes Park, CO.
Photo by Joe Walsh



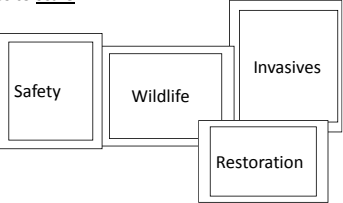
Eldorado County, CA FireWise meeting
Photo by Daniel R. Williams



John & Nancy Oliver, Taylor County, FL
Photo by Stephanie Grayzeck

Strategies: Enhancing community collaboration

- Define the issue where people are at (“framing” the issue) – life & property safety, forest health, wildlife & watersheds... relates to scale



- Different people will respond to different issue frames

Strategies: Enhancing community collaboration


- Participatory mapping – “living room” meetings, community picnics/gatherings



Josephine County, OR values-at-risk mapping Photo by Jo. Co. Fire Plan



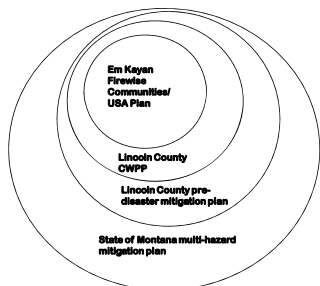
High Knob, VA cul-de-sac map
Photo by Stephanie Grayzeck



Lake County, CO WUI and priority risk map, Lake Co. CWPP

Skills & Resources: Linked plans and strategies

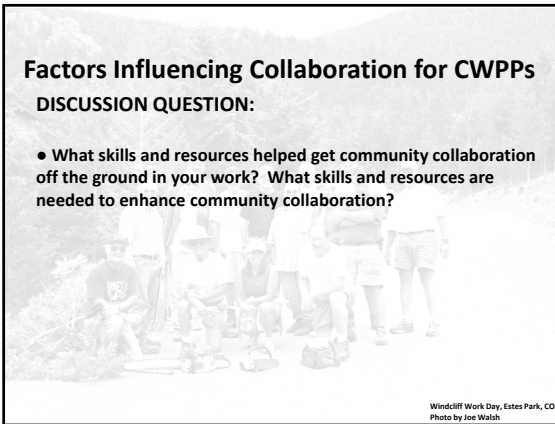
- Linked plans can help organizations coordinate strategies and use resources efficiently



Factors Influencing Collaboration for CWPPs

DISCUSSION QUESTION:

- What skills and resources helped get community collaboration off the ground in your work? What skills and resources are needed to enhance community collaboration?



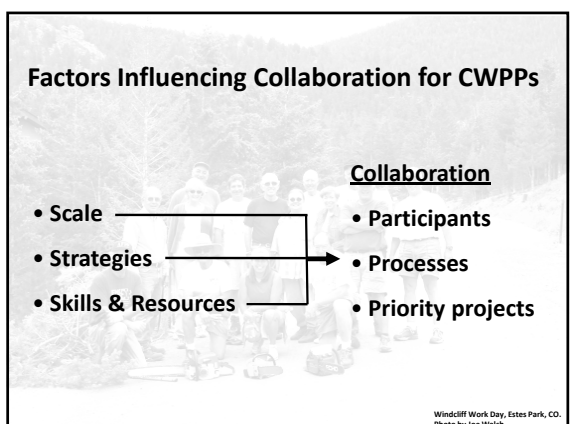
Windcliff Work Day, Estes Park, CO. Photo by Joe Walsh

Factors Influencing Collaboration for CWPPs

- Scale
- Strategies
- Skills & Resources

Collaboration

- Participants
- Processes
- Priority projects

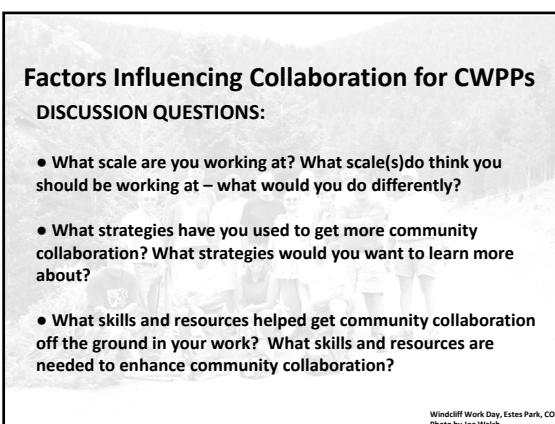


Windcliff Work Day, Estes Park, CO. Photo by Joe Walsh

Factors Influencing Collaboration for CWPPs

DISCUSSION QUESTIONS:

- What scale are you working at? What scale(s) do you think you should be working at – what would you do differently?
- What strategies have you used to get more community collaboration? What strategies would you want to learn more about?
- What skills and resources helped get community collaboration off the ground in your work? What skills and resources are needed to enhance community collaboration?



Windcliff Work Day, Estes Park, CO. Photo by Joe Walsh